

Sanjaju li knjižničari strojno razumljive bibliografske zapise?

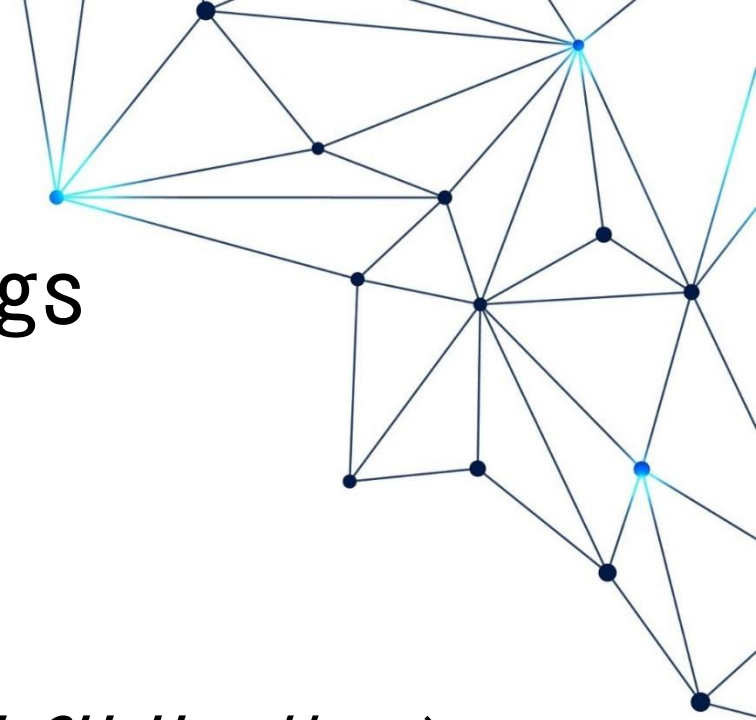
MeSH na putu prema povezanim podacima

Ivana Majer

Medicinski fakultet Sveučilišta u Zagrebu,
Središnja medicinska knjižnica



Tezaurus Medical Subject Headings



- kontrolirani rječnik biomedicinskih termina
- National Library of Medicine - NLM
- oko 28 tisuća predmetnih odrednica (engl. *MeSH Headings*), oko 90 tisuća ulaznih termina (engl. *entry terms*), oko 240 tisuća dopunskih pojmova (engl. *Supplementary Concept Records*), 80 pododrednica u 2017. godini
- besplatno dostupan, u više formata
- prijevod na 15-ak jezika
- MeSH Browser, <https://meshb.nlm.nih.gov/search>

Liver Neoplasms MeSH Descriptor Data 2018

Details

Qualifiers

MeSH Tree Structures

Concepts

MeSH Heading Liver Neoplasms

Tree Number(s) C04.588.274.623

C06.301.623

C06.552.697

Unique ID D008113

Annotation coord IM with histol type of neopl (IM), including [HEPATOMA \(IM\)](#); [LIVER NEOPLASMS, EXPERIMENTAL](#) is available; be careful: do not confuse "hepatic neopl" with "intrahepatic neopl": "intrahepatic neopl" may refer to [BILE DUCT NEOPLASMS](#) with regard to [BILE DUCTS, INTRAHEPATIC](#), not [LIVER NEOPLASMS](#)

Scope Note Tumors or cancer of the [LIVER](#).

Entry Version LIVER NEOPL

Entry Term(s) Cancer of Liver

Cancer of the Liver

Cancer, Hepatocellular

Hepatic Cancer

Hepatic Neoplasms

Hepatocellular Cancer

Liver Cancer

Neoplasms, Hepatic

Neoplasms, Liver

NLM Classification # W1 735

Date Established 1966/01/01

Date of Entry 1999/01/01

Revision Date 2012/07/03

Načela sadržajne obrade

Predmetne
odrednice

Liver Neoplasms MeSH Descriptor Data 2018

Details

Qualifiers

MeSH Tree Structures

Concepts

Allowable Qualifiers

blood (BL)
blood supply (BS)
cerebrospinal fluid (CF)
chemically induced (CI)
chemistry (CH)
classification (CL)
complications (CO)
congenital (CN)
diagnosis (DI)
diagnostic imaging (DG)
diet therapy (DH)
drug therapy (DT)
economics (EC)
embryology (EM)
enzymology (EN)
epidemiology (EP)
ethnology (EH)
etiology (ET)
genetics (GE)
history (HI)
immunology (IM)
metabolism (ME)
microbiology (MI)
mortality (MO)
...

Stablolika
struktruca

Pododrednice

Details

Qualifiers

MeSH Tree Structures

Concepts

Digestive System Diseases [C06]

Digestive System Neoplasms [C06.301]

Biliary Tract Neoplasms [C06.301.120] +

Gastrointestinal Neoplasms [C06.301.371] +

Liver Neoplasms [C06.301.623] -

Adenoma, Liver Cell [C06.301.623.040]

Carcinoma, Hepatocellular [C06.301.623.160]

Liver Neoplasms, Experimental [C06.301.623.460]

Pancreatic Neoplasms [C06.301.761] +

Peritoneal Neoplasms [C06.301.780]

Neoplasms [C04]

Neoplasms by Site [C04.588]

Digestive System Neoplasms [C04.588.274]

Biliary Tract Neoplasms [C04.588.274.120] +

Gastrointestinal Neoplasms [C04.588.274.476] +

Liver Neoplasms [C04.588.274.623] -

Adenoma, Liver Cell [C04.588.274.623.040]

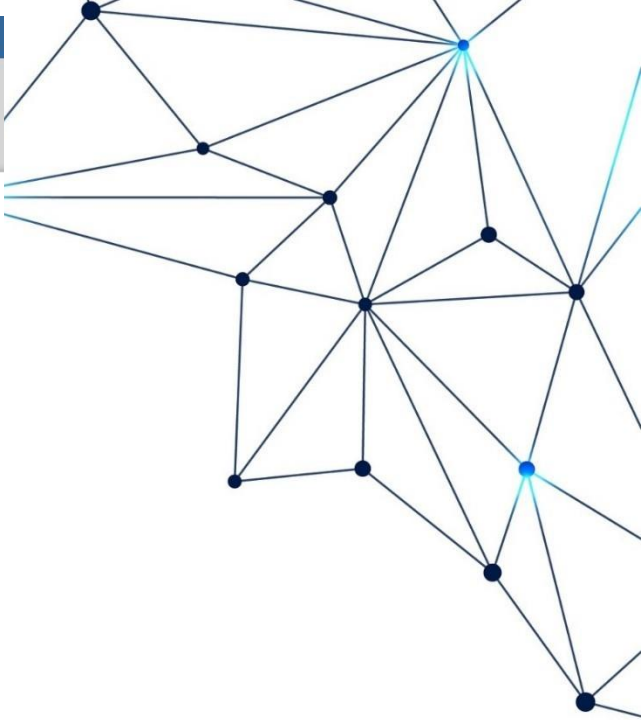
Carcinoma, Hepatocellular [C04.588.274.623.160]

Liver Neoplasms, Experimental [C04.588.274.623.460]

Pancreatic Neoplasms [C04.588.274.761] +

Peritoneal Neoplasms [C04.588.274.780]

...



- Article types
 - Clinical Trial
 - Review
 - Customize ...
- Text availability
 - Abstract
 - Free full text
 - Full text
- PubMed Commons
 - Reader comments
 - Trending articles
- Publication dates
 - 5 years
 - 10 years
 - Custom range...
- Species
 - Humans
 - Other Animals
- [Clear all](#)
- [Show additional filters](#)

Format: Summary Sort by: Most Recent Per page: 20

Search results

Items: 16

- [Randomized clinical trial on enhanced recovery versus standard care following open liver resection.](#)
 1. Jones C, Kelliher L, Dickinson M, Riga A, Worthington T, Scott MJ, Vandrevala T, Fry CH, Karanjia N, Quiney N.
Br J Surg. 2013 Jul;100(8):1015-24. doi: 10.1002/bjs.9165. Epub 2013 May 21.
PMID: 23696477
[Similar articles](#)
- [Treatment outcome for patients with primary NSCLC and synchronous solitary metastasis.](#)
 2. Xu Q, Wang Y, Liu H, Meng S, Zhou S, Xu J, Schmid-Bindert G, Zhou C.
Clin Transl Oncol. 2013 Oct;15(10):802-9. doi: 10.1007/s12094-013-1008-2. Epub 2013 Feb 22.
PMID: 23430537
[Similar articles](#)
- [A home-based exercise program to improve function, fatigue, and sleep quality in patients with Stage IV lung and colorectal cancer: a randomized controlled trial.](#)
 3. Cheville AL, Kollasch J, Vandenberg J, Shen T, Grothey A, Gamble G, Basford JR.
J Pain Symptom Manage. 2013 May;45(5):811-21. doi: 10.1016/j.jpainsymman.2012.05.006. Epub 2012 Sep 24.
PMID: 23017624 **Free PMC Article**
[Similar articles](#)
- [Illness experience in patients with hepatocellular carcinoma: an interpretative phenomenological analysis study.](#)
 4. Fan SY, Eiser C.
Eur J Gastroenterol Hepatol. 2012 Feb;24(2):203-8. doi: 10.1097/MEG.0b013e32834ec184.
PMID: 22138684
[Similar articles](#)

Send to Filters: [Manage Filters](#)

Find related data
Database: Select
Find items




Search details
"Liver Neoplasms/rehabilitation"
[Mesh] AND "Adult"[Mesh]
Search See more...

Recent Activity
Turn Off Clear

Your browsing activity is empty.


Pretraživanje

Upotreba MeSH-a i MeSH u Središnjoj medicinskoj knjižnici

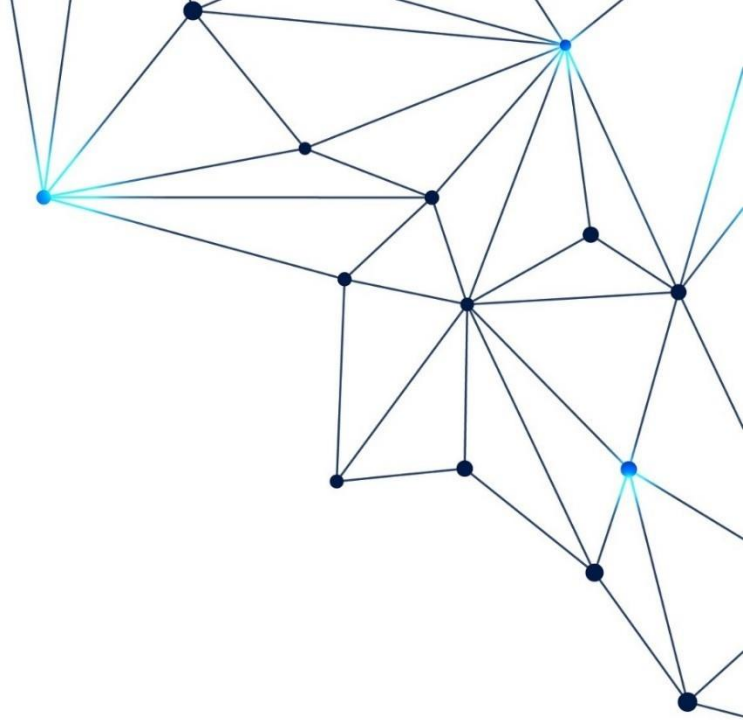
Vrsta građe	knjiga
Autor	• <u>Deller, Thomas</u>
Naslov	• <u>Fotografski atlas neuroanatomije : preparati, crteži i tekst / Thomas Deller, Tamás Sebestény ; preveo i uredio Mario Vukšić.</u>
Izdanje	1. pretisnuto i popravljeno izd.
Impresum	Zagreb : Medicinska naklada, 2015.
Materijalni opis	136 str. : ilustr. u bojama ; 30 cm.
Nakl. cjelina	• <u>Udžbenici Sveučilišta u Zagrebu = Manualia Universitatis studiorum Zagrabiensis</u>
Bib./Saž./Kaz.	Kazalo. Bibliografija: str. 130.
ISBN	9789531767149
Predmet (MeSH)	• <u>Nervous System -- anatomy and histology</u>
Predmet (hrvMeSH)	• <u>Živčani sustav -- anatomija i histologija</u>
Vrsta/Oblik (MeSH)	• <u>Atlases</u> • <u>Handbooks</u> • <u>Examination Questions</u>
Vrsta/Oblik(hrvMeSH)	• <u>Atlasi</u> • <u>Priručnici</u> • <u>Ispitna pitanja</u>
NLM broj	• <u>WL 17</u>
Ostali autori	• <u>Sebestény, Tamás</u> • <u>Vukšić, Mario</u>
ID zapisa	000605411
Povezano	<u>Nakladnička cjelina: Udžbenici Sveučilišta u Zagrebu = Manualia Universitatis studiorum Zagrabiensis</u>
Lokacija/Signatura	<u>Medicinski fakultet-SMK:</u> <u>Studentska zbirka</u> 
Lokacija/Signatura	<u>Medicinski fakultet-SMK:</u> <u>Zbirka monografija WL 17</u> 
Lokacija/Signatura	<u>Medicinski fakultet-MKRebro:</u> <u> WL 17</u> 

65012	a Nervous System x anatomy and histology
65019	a Živčani sustav x anatomija i histologija 2 hrvmesh
655 2	a Atlases
655 2	a Handbooks
655 2	a Examination Questions
655 9	a Atlasi 2 hrvmesh
655 9	a Priručnici 2 hrvmesh
655 9	a Ispitna pitanja 2 hrvmesh

Predmetna obrada

Vrsta građe	knjiga
Autor	● Jurčević, Slavica
Naslov	● Značenje eksternalizacije u procesu žalovanja za sinom nestalim tijekom rata i/ili posmrtno identificiranim : magistarski rad / Slavica Jurčević.
Impresum	Zagreb : [s. n.], 2005.
Materijalni opis	114 str. : ilustr. ; 30 cm.
Napomena	Sažetak ; Summary.
Disert./Magist.	Magistarski rad, Medicinski fakultet Sveučilišta u Zagrebu, 2005.
Bib./Saž./Kaz.	Bibliografija: str. 80-83.
Predmet (MeSH)	<ul style="list-style-type: none"> ● Grief ● Maternal Behavior ● Adaptation, Psychological ● Aged ● Depressive Disorder ● Female ● Humans ● Male ● Middle Aged ● Mother-Child Relations ● Mothers -- psychology ● Object Attachment ● Self Report ● Warfare
Predmet (hrvMeSH)	<ul style="list-style-type: none"> ● Majčinsko ponašanje ● Žalost ● Adaptacija, psihološka ● Depresivni poremećaj ● Ljudi ● Majka-dijete, odnosi ● Majke -- psihologija ● Muška osoba ● Objekt, odnos ● Osoba srednjih godina ● Rat ● Starija osoba ● Ženska osoba
Predmet-Geo.(MeSH)	● Croatia
Pred.-Geo.(hrvMeSH)	● Hrvatska
Ključne riječi	● *Osječko-baranjska županija
ID zapisa	000508218
Lokacija/Signatura	Medicinski fakultet-SMK: Zbirka monografija 3460 

65012	a Grief
65012	a Maternal Behavior
65022	a Adaptation, Psychological
65022	a Aged
65022	a Depressive Disorder
65022	a Female e check tag
65022	a Humans e check tag
65022	a Male e check tag
65022	a Middle Aged
65022	a Mother-Child Relations
65022	a Mothers x psychology
65022	a Object Attachment
65022	a Self Report
65022	a Warfare
65019	a Majčinsko ponašanje 2 hrvmesh
65019	a Žalost 2 hrvmesh
65029	a Adaptacija, psihološka 2 hrvmesh
65029	a Depresivni poremećaj 2 hrvmesh
65029	a Ljudi e check tag 2 hrvmesh
65029	a Majka-dijete, odnosi 2 hrvmesh
65029	a Majke x psihologija 2 hrvmesh
65029	a Muška osoba e check tag 2 hrvmesh
65029	a Objekt, odnos 2 hrvmesh
65029	a Osoba srednjih godina 2 hrvmesh
65029	a Rat 2 hrvmesh
65029	a Starija osoba 2 hrvmesh
65029	a Ženska osoba e check tag 2 hrvmesh
651 2	a Croatia
651 9	a Hrvatska 2 hrvmesh
653 5	a Osječko-baranjska županija



Indeksiranje

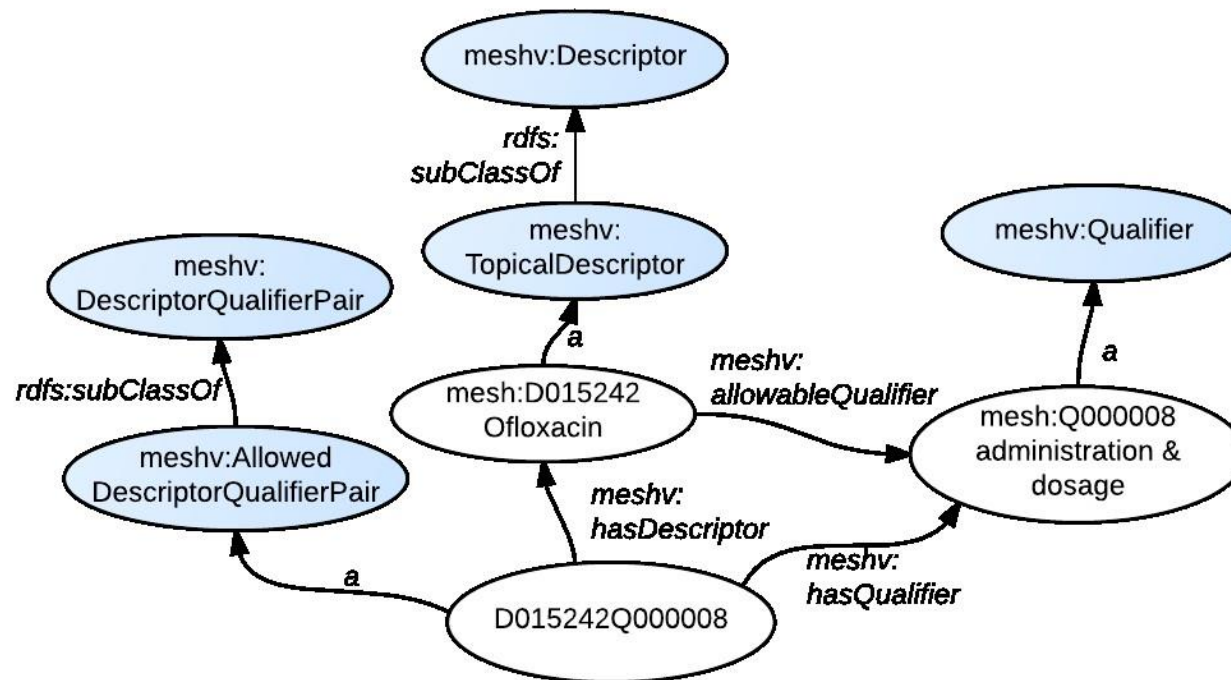
Prijevod MeSH-a na hrvatski jezik

Medical Subject Headings RDF

- reprezentacija tezaurusa MeSH u obliku povezanih podataka (engl. *Linked Data*)
- MeSH RDF, <https://id.nlm.nih.gov/mesh/>
- RDF, URI

RDF graf s prikazom kombiniranja predmetne odrednice i pododrednice

D015242Q000008,
Ofloxacin/administration &
dosage



Full ▾

Endovascular neurosurgery through clinical cases

Author(s): Mitsos, Aristotelis P, author

Title(s): Endovascular neurosurgery through clinical cases / Aristotelis P. Mitsos.

Country of Publication: Italy

Publisher: Milan : Springer, [2015]

Description: xii, 180 pages : illustrations

Language: English

ISBN: 9788847056862 (alk. paper)
8847056861 (alk. paper)
9788847056879 (e-Book)

LCCN: 2014952198

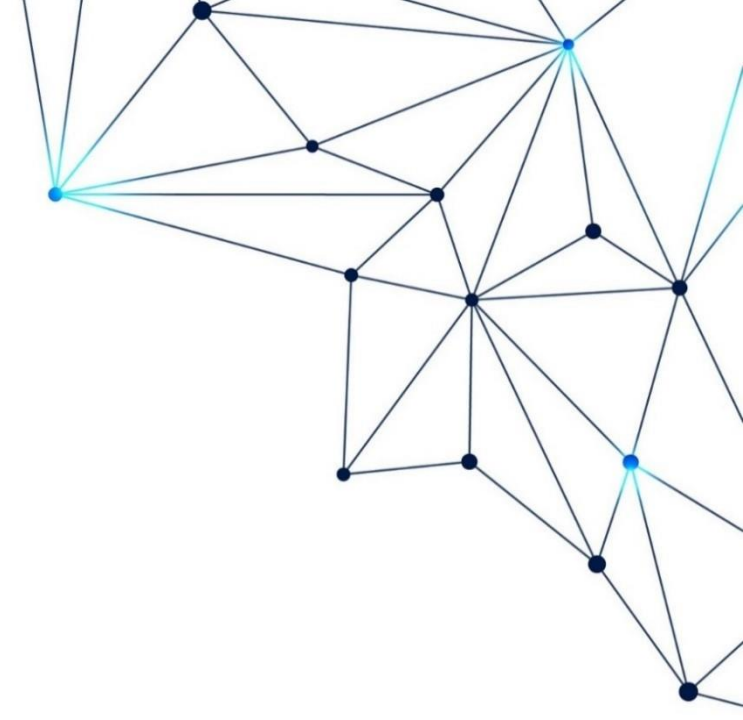
MeSH: Central Nervous System Diseases*
Endovascular Procedures/methods
Neuroradiography/methods
Neurosurgical Procedures/methods

Publication Type(s): Case Reports

Notes: Includes bibliographical references.

NLM ID: [101650197](#) [Book]

- 000 01479aam a2200421 i 450
- 001 1650197
- 005 20170702011514.0
- 008 141219s2015 it a b 000 0 eng d
- 010 __ |a 2014952198
- 020 __ |a 9788847056862 (alk. paper)
- 020 __ |a 8847056861 (alk. paper)
- 020 __ |z 9788847056879 (e-Book)
- 035 __ |9 101650197
- 040 __ |a OHX |b eng |e rda |c OHX |d YDXCP
- 041 09 |a eng
- 042 __ |a pcc |a nlmcopyc
- 044 __ |9 Italy
- 060 00 |a 2015 A-469
- 060 10 |a WL 301
- 072 _7 |a RD |2 lcco
- 100 1_ |a Mitsos, Aristotelis P., |e author.
- 245 10 |a Endovascular neurosurgery through clinical cases / |c Aristotelis P. Mitsos.
- 264 _1 |a Milan : |b Springer, |c [2015]
- 300 __ |a xii, 180 pages : |b illustrations
- 336 __ |a text |b txt |2 rdacontent
- 337 __ |a unmediated |b n |2 rdamedia
- 338 __ |a volume |b nc |2 rdacarrier
- 504 __ |a Includes bibliographical references.
- 650 12 |a Central Nervous System Diseases |0 <https://id.nlm.nih.gov/mesh/D002493>
- 650 22 |a Endovascular Procedures |x methods |0 <https://id.nlm.nih.gov/mesh/D057510Q000379>
- 650 22 |a Neuroradiography |x methods |0 <https://id.nlm.nih.gov/mesh/D009485Q000379>
- 650 22 |a Neurosurgical Procedures |x methods |0 <https://id.nlm.nih.gov/mesh/D019635Q000379>
- 655 _2 |a Case Reports |0 <https://id.nlm.nih.gov/mesh/D002363>
- 992 __ |p P3 |e EF |a 20150123
- 993 __ |a EXL |b 20150213
- 994 __ |a CDN |b 20150303
- 995 __ |a AUTH |b 20150312 |c REV |d 20170630
- 999 __ |a AUTH



URI–ji u kataložnim zapisima NLM–a (NLM Catalog, LocatorPlus)

MARC 21, polja 650, 651, 655, potpolje \$0



650 12 |a Central Nervous System Diseases |0 <https://id.nlm.nih.gov/mesh/D002493>

650 22 |a Endovascular Procedures |x methods |0 <https://id.nlm.nih.gov/mesh/D057510Q000379>

650 22 |a Neuroradiography |x methods |0 <https://id.nlm.nih.gov/mesh/D009485Q000379>

650 22 |a Neurosurgical Procedures |x methods |0 <https://id.nlm.nih.gov/mesh/D019635Q000379>

655 _2 |a Case Reports |0 <https://id.nlm.nih.gov/mesh/D002363>

URI



Medical Subject Headings **RDF**

[Home](#) [SPARQL Query Editor](#) [Documentation](#)

[Sample Queries](#) [Download](#) [API](#) [MeSH Home](#)

About: [Central Nervous System Diseases](#) 

<http://id.nlm.nih.gov/mesh/D002493>



Type: [MeSH TopicalDescriptor](#)

Topical Descriptors indicate the subject of an indexed item such as a journal article. See D063926, 'Drug Hypersensitivity Syndrome', for an example.
[more types...](#)

Related to

allowableQualifier (MeSH Qualifier)

- [urine](#)
- [epidemiology](#)
- [chemically induced](#)
- [diagnosis](#)
- [complications](#)
- [physiopathology](#)
- [psychology](#)
- [etiology](#)
- [ethnology](#)
- [parasitology](#)
- [more...](#)

broaderDescriptor (MeSH TopicalDescriptor)

- [Nervous System Diseases](#)

treeNumber (MeSH TreeNumber)

- [C10.228](#)

preferredConcept (MeSH Concept)

- [Central Nervous System Diseases](#)

preferredTerm (MeSH Term)

- [T007268](#)

annotation

- "GEN: prefer specifics; DF: CNS DIS"

dateEstablished

- "1966-01-01"

onlineNote

- "pre-explosion = CENTRAL NERVOUS SYSTEM DISEASES (PX)"

active

- "true"

dateCreated

- "1999-01-01"

dateRevised

- "1999-11-03"

identifier

- "D002493"

label

- "Keskushermoston sairaudet"
- "Sykdommer i sentralnervesystemet"
- "НЕРВНОЙ СИСТЕМЫ ЦЕНТРАЛЬНОЙ БОЛЕЗНИ"
- "中枢神経系疾患"
- "Doenças do Sistema Nervoso Central"
- "Maladie du système nerveux central"
- "Choroby OUN"
- "Zentralnervensystemkrankheiten"
- "Central Nervous System Diseases"
- "Centrala nervsystemets sjukdomar"
- "Ziekte, centraalzenuwstelsel-"
- "nemoci centrálního nervového systému"
- "Enfermedades del Sistema Nervioso Central"
- "SREDIŠNJI ŽIVČANI SUSTAV, BOLESTI"
- "Malattie del sistema nervoso centrale"

Related From

(MeSH TopicalDescriptor) **broaderDescriptor**

- [Ocular Motility Disorders](#)
- [Pneumocephalus](#)
- [Movement Disorders](#)
- [Meningitis](#)
- [High Pressure Neurological Syndrome](#)
- [Hyperekplexia](#)
- [Encephalomyelitis](#)
- [Brain Diseases](#)
- [Central Nervous System Infections](#)
- [Spinal Cord Diseases](#)

(MeSH AllowedDescriptorQualifierPair) **hasDescriptor**

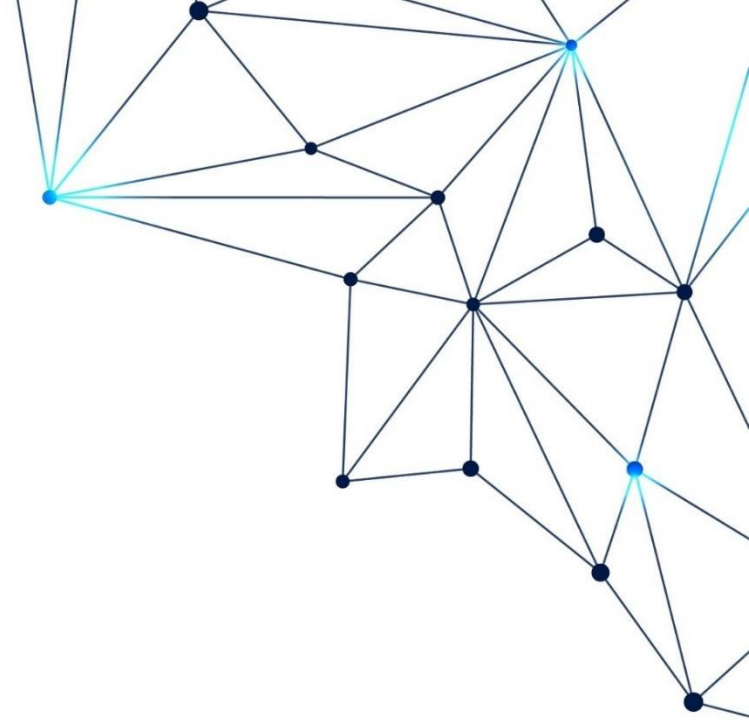
- [Central Nervous System Diseases/prevention & control](#)
- [Central Nervous System Diseases/ethnology](#)
- [Central Nervous System Diseases/etiology](#)
- [Central Nervous System Diseases/surgery](#)
- [\[OBSOLETE\] Central Nervous System Diseases/radionuclide imaging](#)
- [Central Nervous System Diseases/economics](#)
- [Central Nervous System Diseases/epidemiology](#)
- [Central Nervous System Diseases/physiopathology](#)
- [Central Nervous System Diseases/embryology](#)
- [Central Nervous System Diseases/metabolism](#)
- [more...](#)

(MeSH SCR Disease) **preferredMappedTo**

- [Neurosarcoidosis](#)
- [Endocrine-Cerebroosteodysplasia](#)
- [Flynn Aird syndrome](#)
- [Skeletal Dysplasia And Progressive Central Nervous System Degeneration, Lethal](#)
- [Renal cysts and diabetes syndrome](#)



Generated by the [LODEStar](#) linked data browser from the Functional Genomics Production Team (FGPT)



Hvala na pozornosti!



1947–2017
70 godine Središnje
medicinske knjižnice



1917–2017
100 godina Medicinskog
fakulteta Sveučilišta
u Zagrebu



ivana.majer@mef.hr

Majer, I. Sanjaju li knjižničari strojno razumljive bibliografske zapise? 28.-29. studeni 2017., Nacionalna i sveučilišna knjižnica u Zagrebu.

© CC BY 3.0 HR

STRUČNI SKUP KNJIŽNIČNI PODACI: INTEROPERABILNOST, POVEZIVANJE I RAZMJENA, 28.-29.11.2017.,
NACIONALNA I SVEUČILIŠNA KNJIŽNICA U ZAGREBU